

Allscripts Analytics

Access Center

August 2012

vitalcenter

Embrace the new world of healthcare



Submit questions during the webinar

A screenshot of a web-based Q&A interface. At the top, there's a blue header bar with a question mark icon and the text 'Q&A'. Below this is a tab labeled 'All (0)'. The main area contains a dropdown menu labeled 'Ask:' with 'All Panelists' selected. Below the dropdown is a text input field with placeholder text: 'Select a participant in the ask menu first and type your question here. There is a 256 character'. To the right of the text field is a 'Send' button.

vitalcenter



Agenda

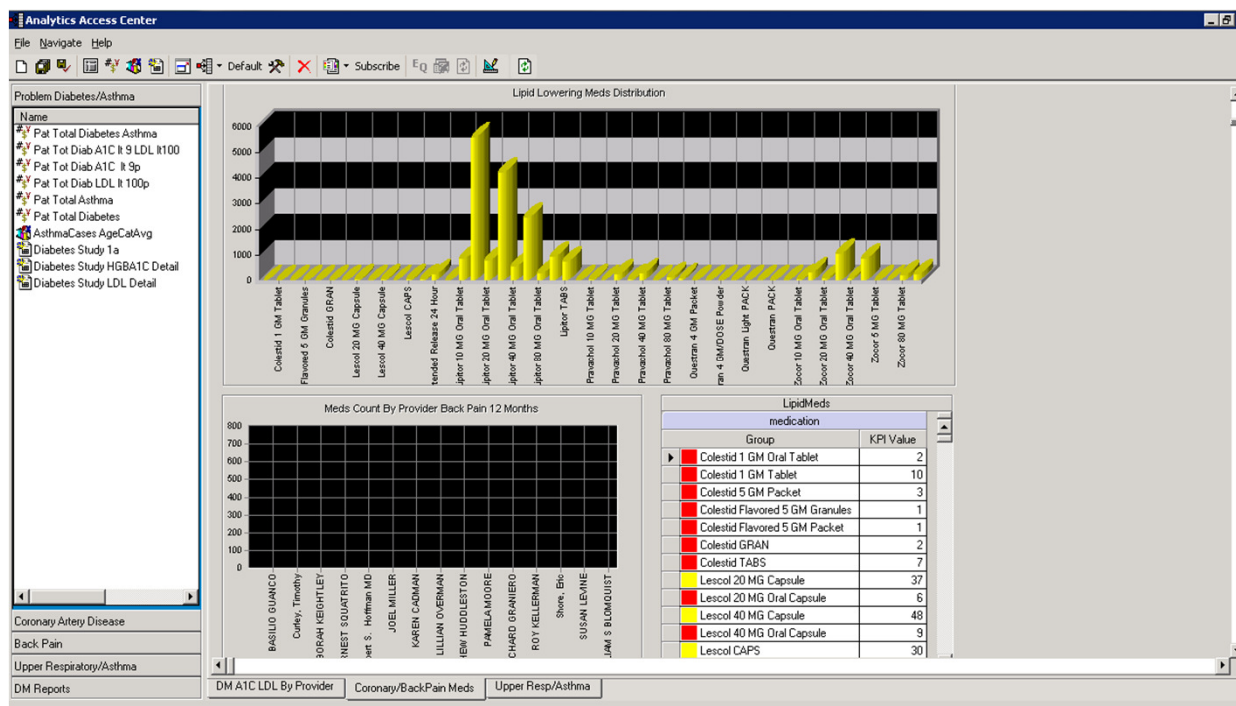
- Access Center example
- Overview of Access Center tools
- Building Dashboard objects
 - Daily Monitors
 - KPIs
 - Charts
- Saving Access Center objects
- Tips and Tricks

Embrace the new world of healthcare



Access Center example

- Object Panes
- Dashboards



vitalcenter



Access Center Tools

- Object Pane
 - Custom reports
 - Charts
 - Crosstabs
- Dashboard
 - Key Performance Indicators (KPI)
 - Daily Monitors
 - Charts

Building Dashboard Objects

- KPI
 - Types (Data Source vs. EA Object)
 - Worksheet / Analysis
 - Search required for EA objects
 - Slice fields (non-numeric)
 - Expression
 - Color coding

Building Dashboard Objects

- Daily Monitor
 - Type (Data Source vs. EA Object)
 - Worksheet / Analysis
 - Search required for EA objects
 - Multiple objects per Monitor

Building Dashboard Objects

- Charts
 - Built prior to use
 - Search required
 - Chart options available to PAC users

Saving Objects

- Individual objects
 - Use *Save Selected*
 - Some objects have to be saved before use
 - Some object types require a full save
- Access Center saves
 - Dashboard objects can be utilized in multiple PACs
 - Good for multiple providers/groups

Tips and Tricks

- Build tabs/panes by topic
 - Make the interaction as simple as possible
- Label everything!
 - Data isn't always obvious to non-Analytics users
 - Too much clarity is not a common problem
- Make it easy for users
 - PAC objects by user/group name
 - Work with them to build it

Embrace the new world of healthcare



Thank you for joining us today. For additional assistance....

You can contact us through our website at
www.galenhealthcare.com

The screenshot shows the GALEN Healthcare Solutions website. The header includes the company logo and a navigation menu with links: VitalCenter | Webcasts | Reporting | Blog | Wiki | Careers | Home. The 'Wiki' link is circled in red. Below the header is a secondary navigation bar with links: Technical Services | Professional Services | Testimonials | About Us | Contact Us. The 'Contact Us' link is also circled in red. The main content area features the tagline 'embrace the new world of healthcare' and a stethoscope image. A text block describes the HITECH Act. A 'vitalcenter' logo is present. A 'contact us' form is overlaid on the right side of the page, containing the following fields and options:

contact us

First Name *

Last Name *

Company *

Phone *

Email *

City *

State/Province *

☐ Technical Services

☐ Project Management

☐ Implementations

vitalcenter